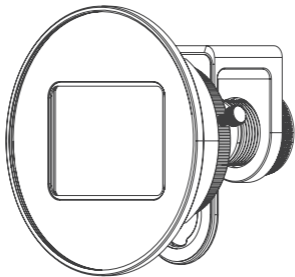


SmallRig



1.55x / 1.33x

Anamorphic Lens for Mobile Phone (T-mount)

手机电影镜头 (T卡口)

Operating Instruction / 操作指引

- Thank you for purchasing SmallRig's product.
感谢您购买 SmallRig 产品。
- Please read this Operating Instruction carefully.
使用本产品之前，请仔细阅读操作指引。
- Please follow the safety warnings.
请注意所有警告提示并遵循使用操作指引的所有指令。

Warnings / 重要提示

1. Not suitable for lenses with a shooting angle $> 85^\circ$, such as the common ultra-wide lenses for smartphone cameras.

不适用于拍摄角度 $> 85^\circ$ 的镜头，例如手机镜头中所标注的超广角镜头。

2. Only compatible with devices with a T-mount interface.
(Works with M brand T-mount, not Fotorgear).

只适用于接T卡口的设备（适配于M品牌T卡口，不适配于Fotorgear品牌T卡口）。

3. It requires a mobile filming app for use. Recommended apps: Blackmagic Cam, FiLMiC Pro, FotorGear.

需搭配手机拍摄App使用，推荐 Blackmagic Cam、FiLMiC Pro、FotorGear。

4. When installing the lens, ensure it is perfectly horizontal or vertical, which can be determined by the alignment marks on the lens surface or the straightness of the flare during filming.

镜头安装时要确保完全水平或竖直，可通过观测镜头表面的刻度线或镜头拉丝效果是否平直来判断。

5. The hole of the lens clip must be aligned with the lens, any misalignment may result in vignetting.

镜头夹的孔位务必对准镜头，如有偏移会导致暗角。

6. Prevent the lens from scratching, which will affect the image quality.

镜片注意防止刮花，否则会影响拍摄画质。

7. Keep away from strong acid liquids.

远离强酸液体。

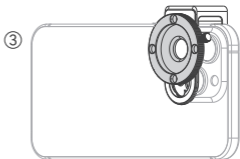
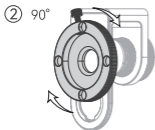
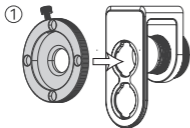
In the Box / 包装清单

Anamorphic Lens 手机镜头	× 1	Lens Cleaning Cloth 镜头清洁布	× 1
Lens clip 手机镜头夹	× 1	Storage Box 镜头收纳包	× 1
Silicone Lens Cap 硅胶镜头保护盖	× 1	Operating Instruction 操作指引	× 1

Installation Instruction / 安装步骤

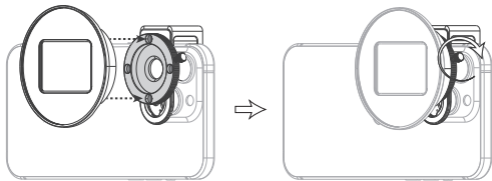
① Install with the included lens clip 配合自带镜头夹

1. Rotate the lens base 90° clockwise and lock it onto the lens clip.
将镜头底座顺时针旋转90°卡在镜头夹上。
2. Attach the lens clip to the phone lens and align it the main or telephoto lens.
将镜头夹安装在手机镜头处，对准主摄镜头或长焦镜头。



3. Attach the lens body to the base with the magnetic mount and align the alignment line upward. Adjust the angle for level and tighten the screw on the base to secure the lens.

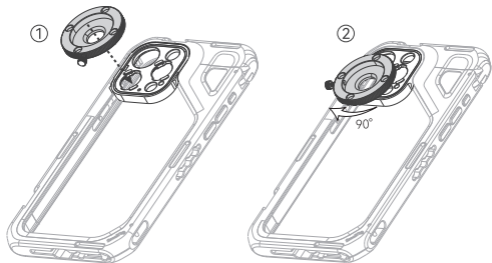
将镜头主体通过磁吸安装在镜头底座上，白色刻度线朝上，调整角度，保持镜头完全水平。然后旋紧磁吸底座上的固定螺丝，确保镜头被安全的固定在底座上。



② Install with the phone cage or case with T-mount 配合带T卡口的拓展框或手机壳

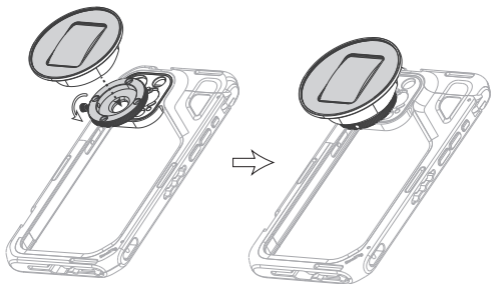
1. Hold the magnetic base, align it with the mounting slot of the main or telephoto lens of the phone, and rotate it 90° clockwise.

握住磁吸底座，对准手机主摄镜头或长焦镜头的卡口，顺时针旋转 90° 卡紧。



2. Secure the lens onto the base magnetically, adjust the angle to ensure perfect alignment, maintain a completely level position, and then securely fasten the lens to the base by tightening the screw.

将镜头磁吸到底座上，调整角度，保持镜头完全水平，然后旋紧磁吸底座上的固定螺丝，确保镜头被安全的固定在底座上。



③ Using filters / 使用滤镜

1.55x Anamorphic Lens
for Mobile Phone (T-mount)

1.55x 手机电影镜头 (T卡口)

1.33x Anamorphic Lens
for Mobile Phone (T-mount)

1.33x 手机电影镜头 (T卡口)

The lens has a 67mm female thread on the front of the lens, allowing direct use of the same diameter threaded filters or filter adapters.

镜头前端有67mm内螺纹，可直接使用相同直径的螺纹滤镜或滤镜转接环。

④ App operation / APP 使用方式

- Recommended apps: Blackmagic Cam, FiLMiC Pro, FotorGear.
推荐 Blackmagic Cam、FiLMiC Pro、FotorGear。

① Take Blackmagic Cam

1. Open the software, click the "Settings" button.

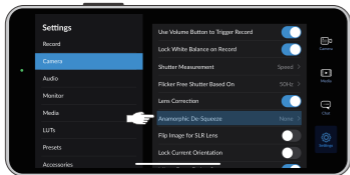


▲ 1.55x Magnification

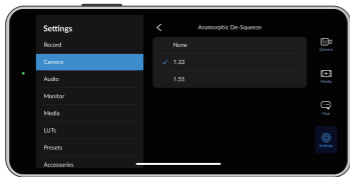


▲ 1.33x Magnification

2. In the "Camera" column, finding the "Anamorphic De-Squeeze".



3. Choose "1.55" or "1.33".



Note: FiLMiC Pro is a paid software, Blackmagic Cam and FotorGear are free to use.

② 以 Fotorgear 为例

1. 打开软件，点击“设置”图标。



▲ 1.55x 倍率



▲ 1.33x 倍率

2. 点击“更多设置”。



3. 下拉菜单，在变形镜头支持选项中，选择“1.55x”或“1.33x”变形镜头，然后点击顶部“Done”即完成设置。



1.55x 变形镜头



1.33x 变形镜头

提示：FiLMiC Pro为付费软件，Black magic Cam、FotorGear可免费使用。

Specifications / 产品参数

1.55x Anamorphic Lens for Mobile Phone (T-mount)

1.55x 手机电影镜头 (T卡口)

Angle (Diagonal) 角度 (对角线)	Max 130°
Magnification 倍率	1.55x
Distortion 畸变	-83°
Minimum Focusing Distance 最近对焦距离	2.7 - 3.5in 70.0 - 90.0 mm
Mount Type 卡口类型	Standard T-mount 标准T卡口
Optical Structure 光学结构	3 Pieces of HD Optical Glass 3片高清光学玻璃
Coating Specifications 镀膜规格	Multi-layer Anti-reflection Broadband 多层增透宽带

1.33x Anamorphic Lens for Mobile Phone (T-mount)

1.33x 手机电影镜头 (T卡口)

Angle (Diagonal) 角度 (对角线)	Max 120°
Magnification 倍率	1.33x
Distortion 畸变	-62°
Minimum Focusing Distance 最近对焦距离	2.7 - 3.5in 70.0 - 90.0 mm
Mount Type 卡口类型	Standard T-mount 标准T卡口
Optical Structure 光学结构	3 Pieces of HD Optical Glass 3片高清光学玻璃
Coating Specifications 镀膜规格	Multi-layer Anti-reflection Broadband 多层增透宽带

Service & Warranty

Please keep your original receipt and guarantee card. Be sure the dealer has written on it the date of purchase and SN of the product. These are required for warranty service.

After-sale Warranty Terms

SmallRig products are entitled to warranty services as of the date of payment.

- Electronic products (except V mount battery): 1-year warranty.
- V mount battery: 2-year warranty.
- Non-electronic products: 2-year warranty.

Note: In case of any conflict between our warranty period policy and applicable laws and regulations of the country / region where the products are sold, the latter shall prevail.

This Warranty Does Not Cover

1. If users fail to adhere to the "Operating Instruction" or any "Warnings" stated in the user manual, resulting in a quality failure, it falls outside the scope of warranty coverage.
2. The product identification or SN label is removed or defaced in any way.
3. Product damage caused by problems not attributable to the quality of the products such as improper use of the products.
4. Product damage caused by unauthorized modification, disassembly, repair and other acts.
5. Product damage caused by fires, floods, lightning and other force majeure factors.

Warranty Mode

- For the products within the scope of warranty, SmallRig will repair or replace them on the basis of specific failures; the repaired / replaced products / parts are entitled to the remaining part of the original warranty period.

Contact Information

- You're advised to contact the online customer service personnel of corresponding shopping platform and submit a repair service application.
- You may also apply for repair service through SmallRig's service email.

Service Email: support@smallrig.com

保修条款

请保留您的原始购买单据及保修卡,同时包含您的购买日期、产品序列号等,这些资料质保服务时均需要提供。

售后质保条款

SmallRig产品自下单付款之日起享有质保服务。

- 电子产品(除V口电池): 1年质保。
- V口电池: 2年质保。
- 非电子产品: 2年质保。

注:若销售地国家或地区的适用法律法规有冲突的,以销售地国家或地区有关质保期的法律法规为准。

质保无效说明

1. 当用户违反操作指引或用户手册中“重要提示”任何一条导致的质量失效,不在质保范围内。
2. 产品序列号标识已经被撕毁或无法辨识,不在质保范围。
3. 产品使用不当等非产品本身质量问题,而造成的产品损坏,不在质保范围。
4. 非官方指导的私自改装、拆解、维修等行为而造成的损坏,不在质保范围。
5. 因火灾、水灾、雷击等不可抗力造成的产品损坏,不在质保范围。

维修方式

·属于质保范围的,SmallRig 根据产品具体的故障对产品进行维修或更换;维修后的产品 / 部件享受原有保修期的剩余时长。

联系方式

- 建议您优先前往相应购买平台联系在线客服,提出产品维修申请。
- 您也可以通过 SmallRig 服务邮箱申请维修服务。

服务邮箱: support@smallrig.com

Guarantee Card / 保修卡

ID No. ID 编号	
Item Name 产品名称	
Purchase Date 购买日期	
User Name 用户姓名	
Mobile 用户电话	
Address 用户地址	
Receipt 购买单据	

EC	REP	Prolinx GmbH Brehmstr.56,40239 Duesseldorf Germany eu@eulinx.eu
-----------	------------	---

UK	REP	Prolinx Global LTD 27 Old Gloucester Street London, WC1N3AX, UK eu@eulinx.eu
-----------	------------	--

Manufacturer: Shenzhen Leqi Innovation Co., Ltd.

制造商: 深圳市乐其创新股份有限公司

Add: Rooms 103, 501 and 601, Building 5, Fenghe Industrial Park, Nos. 1301-50
Guanguang Road, Longhua District, Shenzhen, Guangdong, China.

地址: 中国广东省深圳市龙华区观澜街道新澜社区观光路 1301-50 号丰和工业园厂房
5 栋 103、501、601

Consignor: Shenzhen LC Co., Ltd.

委托商: 深圳市乐长科技有限公司

Add: Rooms 602, Building 5, Fenghe Industrial Park, No. 1301-50 Guanguang Road,
Xinlan Community, Guanlan Street, Longhua District, Shenzhen, Guangdong, China.

地址: 中国广东省深圳市龙华区观澜街道新澜社区观光路 1301-50 号丰和工业园厂房
5 栋 602



WE ARE HERE FOR YOU
服务与支持



ETICHETTATURA AMBIENTALE
ENVIRONMENTAL LABELING

执行标准: GB/T 26572-2011

CE RoHS



LQ-B280-18



Made in China
中国制造