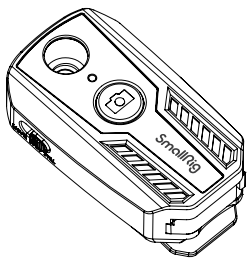


# SmallRig



## Wireless Remote Controller for Select Sony / Canon / Nikon Cameras

User Manual

In order to ensure the safety and prevent the product damages caused by any improper use, please carefully read the "Warnings" below and properly keep this User Manual for future reference.

### Foreword

Thank you for purchasing SmallRig's product.

### Warnings

- Do not dismantle it at random as it contains electronic components and do not drop or crash it.
- Keep it out of the reach of children.
- Please avoid high temperature and high humidity when storing or using this product.
- If you have any questions, please contact the platform for after-sales services.

**!** Please do not disassemble the product. If you have any question, please contact the seller to apply after-sales service.

### In the Box

Remote Control × 1 1/4"-20 Screw × 1 User Manual × 1  
CR2032 Battery × 2 Allen Wrench × 1

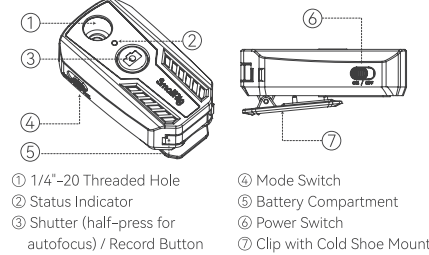
### Compatibility

Sony: Alpha 7R V / Alpha 7R IV / Alpha 7R III / Alpha 7 IV / Alpha 7 III / Alpha 7S III / Alpha 7C II / Alpha 7C / Alpha 7CR / Alpha 9 II / Alpha 9 / Alpha A1 / FX3 / FX30 / Alpha 6700 / Alpha 6600 / Alpha 6100 / Alpha 6400 / ZV-E1 / ZV-E10 / ZV-1 II / ZV-1 / ZV-1F / DSC-RX100M7

Canon: EOS R5 / R6 Mark II / R6 / R7 / R8 / R10 / R / RP / R50 / M6 Mark II / M50 / 90D

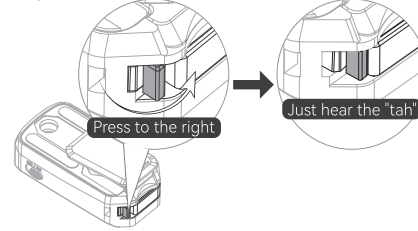
Nikon: Z 50 / Z fc / Z 30

### Product Details

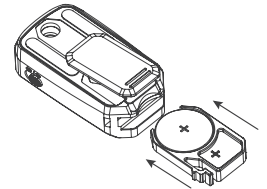


### Preparation Before Use

**Step 1:** Press the position as shown to remove the battery compartment.



**Step 2:** Install the included battery with the "+" pole facing up.



### Pairing Steps

| Brand  | Sony   | Nikon   | Canon  | Canon   |  |
|--|--|---|--|---|--|
| Compatibility                                | Alpha 7R V / Alpha 7R IV / Alpha 7R III / Alpha 7 IV / Alpha 7 III / Alpha 7S III / Alpha 7C II / Alpha 7C / Alpha 7CR / Alpha 9 II / Alpha 9 / Alpha A1 / FX3 / FX30 / Alpha 6700 / Alpha 6600 / Alpha 6100 / Alpha 6400 / ZV-E1 / ZV-E10 / ZV-1 II / ZV-1 / ZV-1F / DSC-RX100M7  | Z 50 / Z fc / Z 30  | EOS R5 / R6 / R7 / R10 / M6 Mark II / 90D  | EOS R6 Mark II / R8 / R50   | EOS R / RP / M50   |
| Pairing steps                                | <ol style="list-style-type: none"> <li>Adjust the remote control power switch to [ON], the status indicator flashes and then goes out, confirm the mode switch adjustment to [LOCK]</li> <li>Adjust the camera settings<br/>a. Select MENU—[Network]—[Transfer / Remote]—[BLE Rmt Ctrl]—[On]<br/>b. Select MENU—[Network]—[BLE function]—[On]<br/>c. Select MENU—[Network]—[BLE Settings]—[Pairing]<br/>③ Press and hold the remote control shutter / record button until the indicator flashes and the camera screen prompts [Allow connection from the device? Connected device: SR-RC3], select [OK]<br/>④ When pairing is complete, [Paired] appears, select [OK]<br/>⑤ Combined with the actual shooting needs, adjust the remote control mode switch to [STILL] (shutter) or [MOVIE] (record)</li> </ol> | <ol style="list-style-type: none"> <li>Adjust the remote control power switch to [ON], the status indicator flashes and then goes out, confirm the mode switch adjustment to [LOCK]</li> <li>Adjust camera settings<br/>a. Select MENU—[SETUP MENU]—[Wireless remote (ML-L7) options]—[ON]<br/>b. Select MENU—[SETUP MENU]—[Wireless remote (ML-L7) options]—[Save wireless remote controller]<br/>③ Press and hold the shutter / record button on the remote control until the light flashes rapidly and then release it<br/>④ After successful pairing, the screen prompts [Wireless remote controller is saved]<br/>⑤ Combined with the actual shooting needs, adjust the remote control mode switch to [STILL] (shutter) or [MOVIE] (record)<br/><b>Note: The remote control mode needs to be the same as the camera mode, and the shutter/record button does not support the half-press autofocus function.</b></li> </ol> | <ol style="list-style-type: none"> <li>Adjust the remote control power switch to [ON], the status indicator flashes and then goes out, confirm the mode switch adjustment to [LOCK]</li> <li>Adjusting camera settings<br/>a. Select MENU—[BLE settings]—[Enable]<br/>b. Select MENU—[BLE connection]—[Connect to Wireless Remote]—[Add a device to connect to]<br/>The camera screen prompts [Pairing in progress. Start pairing on the Wireless Remote.]<br/>③ Press and hold the remote shutter / record button until the indicator flashes and the camera screen indicates [Paired with: SR-RC3], select [OK] to complete the pairing<br/>④ Combined with the actual shooting needs, adjust the remote control mode switch to [STILL] (shutter) or [MOVIE] (record). If you choose [STILL] mode, on the camera home page select [SET] — [Drive mode] — [Self-timer: 10sec/remote] or [Self-timer: 2sec/remote]<br/><b>Note: The remote control mode needs to be the same as the camera mode. R6 camera selects [MOVIE] mode, please select [MENU] — [camera icon] — [6] — [Remote control] — [Enable]</b></li> </ol> | <ol style="list-style-type: none"> <li>Adjust the remote control power switch to [ON], the status indicator flashes and then goes out, confirm the mode switch adjustment to [LOCK]</li> <li>Adjust camera settings<br/>a. Select MENU — [Communication functions] — [BLE settings] — [Enable]<br/>b. Select MENU — [Communication functions] — [Connect to Wireless Remote] — [Add a device to connect to]<br/>The camera screen prompts [Pairing in progress. Start pairing on the Wireless Remote.]<br/>③ Press and hold the remote shutter / record button until the indicator flashes and the camera screen indicates [Paired with: SR-RC3], select [OK] to complete the pairing<br/>④ Combined with the actual shooting needs, adjust the remote control mode switch to [STILL] (shutter) or [MOVIE] (record). If you choose [STILL] mode, on the camera home page select [SET] — [Drive mode] — [Self-timer: 10sec / remote] or [Self-timer: 2sec / remote]<br/><b>Note: The remote control mode needs to be the same as the camera mode.</b></li> </ol> | <ol style="list-style-type: none"> <li>Adjust the remote control power switch to [ON], the status indicator flashes and then goes out, confirm the mode switch adjustment to [LOCK]</li> <li>Adjust camera settings<br/>a. Select MENU — [Function settings] — [Wireless communication settings] — [BLE function] — [Remote]<br/>b. Select MENU — [Wireless communication settings] — [BLE function] — [Pairing]<br/>The camera screen prompts [Pairing in progress. Start pairing on the Wireless Remote.]<br/>③ Press and hold the remote shutter / record button until the indicator flashes and the camera screen indicates [Paired with: SR-RC3], select [OK] to complete the pairing<br/>④ Combined with the actual shooting needs, adjust the remote control mode switch to [STILL] (shutter) or [MOVIE] (record). If you choose [STILL] mode, on the camera home page select [SET] — [Drive mode] — [Self-timer: 10sec / remote] or [Self-timer: 2sec / remote]<br/><b>Note: The remote control mode needs to be the same as the camera mode.</b></li> </ol> |
| Q&A①: Unable to pair or failed to pair       | <ol style="list-style-type: none"> <li>Confirm that the remote control mode switch has been adjusted to [LOCK]</li> <li>Restart the controller and camera setting [BLE Function], and then repeat the procedure all over again</li> <li>Check if the camera's firmware is the most updated one</li> </ol>  | <ol style="list-style-type: none"> <li>Confirm that the mode switch of the remote control has been adjusted to [LOCK]</li> <li>If the camera is already connected to other wireless remote control, you need to delete the connection information before connecting to the new device<br/>Select MENU—[SETUP MENU]—[Wireless remote (ML-L7) options]—[Delete wireless remote controller]<br/>③ Restart the camera and remote control<br/>④ Check if the camera's firmware is the most updated one</li> </ol>  | <ol style="list-style-type: none"> <li>Confirm that the remote control mode switch has been adjusted to [LOCK]</li> <li>If the camera is already connected to other wireless remote control, you need to delete the connection information before connecting to the new device<br/>Select MENU—[BLE connection]—[Connect to Wireless Remote]—[Delete connection information]—[OK]. Follow the pairing steps to re-pair<br/>③ Restart the camera and remote control<br/>④ Check if the camera's firmware is the most updated one</li> </ol>   | <ol style="list-style-type: none"> <li>Confirm that the remote control mode switch has been adjusted to [LOCK]</li> <li>If the camera is already connected to other wireless remote control, you need to delete the connection information before connecting to the new device<br/>Select MENU—[Communication functions]—[Connect to Wireless Remote]—[Delete connection information]—[OK]. Follow the pairing steps to re-pair<br/>③ Restart the camera and remote control<br/>④ Check if the camera's firmware is the most updated one</li> </ol>   | <ol style="list-style-type: none"> <li>Confirm that the remote control mode switch has been adjusted to [LOCK]</li> <li>If the camera is already connected to other wireless remote control, you need to delete the connection information before connecting to the new device<br/>Select MENU—[Wireless communication settings]—[BLE function]—[check / clear connection info]—[Clear settings]. Follow the pairing steps to re-pair<br/>③ Restart the camera and remote control<br/>④ Check if the camera's firmware is the most updated one</li> </ol>  |
| Q&A②: Does not work after successful pairing | <ol style="list-style-type: none"> <li>Make sure the remote control mode switch is adjusted to [STILL] or [MOVIE]</li> <li>Confirm the setting on the camera, select MENU—[Network]—[Transfer / Remote]—[BLE Rmt Ctrl] and make sure that [On] is selected</li> <li>Check if the memory card is full. If it is full, replace the memory card. When the memory card is full, the camera does not respond when you press the shutter / record button</li> </ol>  | <ol style="list-style-type: none"> <li>Make sure the remote control and camera are in the same mode [STILL] or [MOVIE]</li> <li>Check if the memory card is full. If it is full, replace the memory card. When the memory card is full, the camera does not respond when you press the shutter / record button</li> </ol>   | <ol style="list-style-type: none"> <li>Confirming the setting on the camera, select MENU—[Network]—[Transfer/Remote]—[BLE Rmt Ctrl] and make sure that [On] is selected</li> <li>Check that the remote control and camera are in the same mode. If you choose [STILL] mode, make sure the camera home page — [SET] — [Drive mode] — [Self-timer: 10sec/remote] or [Self-timer: 2sec/remote] is selected. When the R6 camera selects [MOVIE] mode, please make sure that [MENU] — [camera icon] — [6] — [Remote control] — [Enable] has been selected</li> <li>Check if the memory card is full. If it is full, replace the memory card. When the memory card is full, the camera does not respond when you press the shutter / record button</li> </ol>  | <ol style="list-style-type: none"> <li>Confirming the setting on the camera, select MENU — [Communication functions] — [BLE settings] and make sure that [Enable] is selected</li> <li>Check that the remote control and camera are in the same mode. If you choose [STILL] mode, make sure the camera home page — [SET] — [Drive mode] — [Self-timer: 10sec/remote] or [Self-timer: 2sec/remote] is selected</li> <li>Check if the memory card is full. If it is full, replace the memory card. When the memory card is full, the camera does not respond when you press the shutter / record button</li> </ol>  | <ol style="list-style-type: none"> <li>Check that the remote control and camera are in the same mode. If you choose [STILL] mode, make sure the camera home page — [SET] — [Drive mode] — [Self-timer: 10sec/remote] or [Self-timer: 2sec/remote] is selected</li> <li>Check if the memory card is full. If it is full, replace the memory card. When the memory card is full, the camera does not respond when you press the shutter / record button</li> </ol>   |

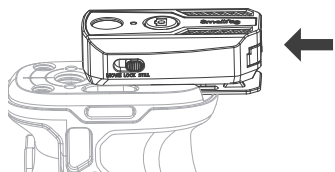
### Indicator Light Description

Battery power 20% ~ 100%: blue light  
Battery power 10% ~ 20%: red light  
Battery power <10%: red light flashing

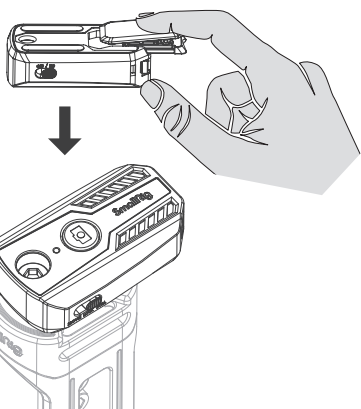
### Remote Control Mounting

① Clip with Cold Shoe Mount installation:

Through the Clip with Cold Shoe Mount, damping the equipment with its built-in cold shoe.



② 1/4"-20 screw installation: After removing the Clip with Cold Shoe Mount, fix the remote control to the built-in 1/4"-20 threaded hole device via a 1/4"-20 screw.



### Attention

- Do not ingest battery, Chemical Burn Hazard; This product contains a button cell battery. If the button cell battery is swallowed, it can cause severe internal burns in just 2 hours and can lead to death.
- Keep new and used batteries away from children.
- If the battery compartment does not close securely, stop using the product and keep it away from children.
- If you think batteries might have been swallowed or placed inside any part of the body, seek immediate medical attention.
- The remote control connection procedure may vary from camera to camera, please refer to the remote control section in the camera manual for details.
- The Bluetooth connection range of 100cm / 32.8in is an estimation, which depends on your surroundings.
- A remote control can only be paired with one camera; if you need to control another camera, refer to the pairing procedure to pair the remote control with the camera you need to control, and the previous camera will be unpaired automatically.
- After successful pairing, the camera and the remote control will connect automatically when the camera and remote control is switched on.
- Please turn off the Power Switch when not in use.

### Specifications

|                       |                      |
|-----------------------|----------------------|
| Operating Voltage     | 3.0V                 |
| Operating Current     | ≤5mA                 |
| Battery Parameters    | 3.0V 220mAh 0.72Wh   |
| Control Range         | about 10m            |
| Operating Temperature | -10°C ~ 45°C         |
| Product Dimensions    | 53.2 × 32.4 × 22.5mm |
| Net Weight            | 18 ± 5g              |
| Material(s)           | ABS + PC             |

The data above comes from SmallRig laboratory and may be subject to changing test environment.

### ISED Statement

English: This device contains licence-exempt transmitter(s)/receiver(s) that comply with Innovation, Science and Economic Development Canada's licence-exempt RSS(s). Operation is subject to the following two conditions:  
(1) This device may not cause interference.  
(2) This device must accept any interference, including interference that may cause undesired operation of the device.  
The digital apparatus complies with Canadian CAN ICES-3 (B)/NMB-3(B).  
French: Cet appareil contient des émetteurs/récepteurs exempts de licence qui sont conformes aux RSS exemptés de licence d'Innovation, Sciences et Développement économique Canada. L'exploitation est soumise aux deux conditions suivantes:  
(1) Cet appareil ne doit pas provoquer d'interférences.  
(2) Cet appareil doit accepter toute interférence, y compris les interférences susceptibles de provoquer un fonctionnement indésirable de l'appareil.  
Appareil numérique du ciem conforme canadien peut - 3 (b) / nmb - 3 (b). This device meets the exemption from the routine evaluation limits in section 2.5 of RSS 102 and compliance with RSS 102 RF exposure, users can obtain Canadian information on RF exposure and compliance. Cet appareil est conforme à l'exemption des limites d'évaluation courante dans la section 2.5 du ciem - 102 et conformité avec rss 102 de l'exposition aux r.f. les utilisateurs peuvent obtenir des données canadiennes sur l'exposition aux champs r.f. et la conformité.  
This equipment complies with Canada radiation exposure limits set forth for an uncontrolled environment.

Cet équipement est conforme aux limites d'exposition aux rayonnements du Canada établies pour un environnement non contrôlé.

The device has been evaluated to meet general RF exposure requirement. The device can be used in portable exposure condition without restriction.  
L'appareil a été évalué pour répondre aux exigences générales d'exposition aux radiofréquences. L'appareil peut être utilisé en condition d'exposition portable sans restriction.

### IC:27649-3902LEQ1

### FCC Compliance Statement

This device complies with Part 15 of the FCC Rules. Operation is subject to the following two conditions:  
(1) This device may not cause harmful interference.  
(2) This device must accept any interference received, including interference that may cause undesired operation.  
(Warning) Changes or modifications not expressly approved by the party responsible for compliance could void the user's authority to operate the equipment.  
(Note) This equipment has been tested and found to comply with the limits for a Class B digital device, pursuant to Part 15 of the FCC Rules. These limits are designed to provide reasonable protection against harmful interference in a residential installation. This equipment generates, uses and can radiate radio frequency energy, if not installed and used in accordance with the instructions, may cause harmful interference to radio communications. However, there is no guarantee that interference will not occur in a particular installation. If this equipment does cause harmful interference to radio or television reception, which can be determined by turning the equipment off and on, the user is encouraged to try to reorient or relocate the receiving antenna.  
Increase the separation between the equipment and receiver.  
Connect the equipment to an outlet in a different circuit than the receiver is connected to.  
Consult the dealer or an experienced radio/TV technician for help.  
RF Warning Statement  
This device has been evaluated to meet general RF exposure requirements. The device can be used in portable exposure condition without restriction.

### FCC ID:ZAZWI-3902LEQ1

### Service Warranty

Please keep your original receipt and guarantee card. Be sure the dealer has written on it the date of purchase and SN of the product. These are required for warranty service.

### After-sale Warranty Terms

- SmallRig products are entitled to warranty services as of the date of payment.
- Electronic products (except v mount battery): 1-year warranty.
- V mount battery: 2-year warranty.
- Non-electronic products: 2-year warranty.

Note: In case of any conflict between our warranty period policy and applicable laws and regulations of the country / region where the products are sold, the latter shall prevail.  
**This Warranty Does Not Cover**  
1. If users fail to adhere to the "Operating Instruction" or any "Warnings" stated in the user manual, resulting in a quality failure, it falls outside the scope of warranty coverage.  
2. The product identification or SN label is removed or defaced in any way.  
3. Product damage caused by problems not attributable to the quality of the products such as improper use of the products.  
4. Product damage caused by unauthorized modification, disassembly, repair and other acts.  
5. Product damage caused by fires, floods, lightning and other force majeure factors.

### Warranty Mode

For the products within the scope of warranty, SmallRig will repair or replace them on the basis of specific failures; the repaired / replaced products / parts are entitled to the remaining part of the original warranty period.

### Contact Information

- You're advised to contact the online customer service personnel of corresponding shopping platform and submit a repair service application.
- You may also apply for repair service through SmallRig's service email. Service Email: support@smallrig.com

### Guarantee Card

|               |  |
|---------------|--|
| ID No.        |  |
| Item Name     |  |
| Purchase Date |  |
| User Name     |  |
| Mobile        |  |
| Address       |  |
| Receipt       |  |

|    |     |   |
|----|-----|---|
| EC | REP | Prolinx GmbH<br>Brehmstr.55,40239 Düsseldorf Germany<br>eu@euilinx.eu               |
| UK | REP | Prolinx Global LTD<br>27 Old Gloucester Street London, WC1N3AX, UK<br>eu@euilinx.eu |

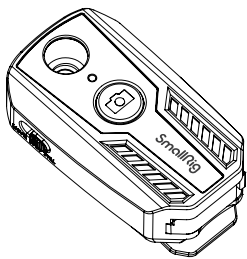
Manufacturer: Shenzhen Leqi Innovation Co., Ltd.  
Add: Rooms 103, 501 and 601, Building 5, Fenghe Industrial Park, Nos. 1301-50 Guangguang Road, Longhua District, Shenzhen, Guangdong, China.  
Consignor: Shenzhen LC Co., Ltd  
Add: Rooms 602, Building 5, Fenghe Industrial Park, No. 1301-50 Guangguang Road, Xinlan Community, Guanlan Street, Longhua District, Shenzhen, Guangdong, China.



WE ARE HERE FOR YOU 服务与支持 ETICHETTATURA AMBIENTALE ENVIRONMENTAL LABELING

Made in China

# SmallRig



## 索尼 / 佳能 / 尼康无线遥控器

用户手册

为了保障使用者的安全以及防止不当使用导致产品损坏, 在使用前仔细阅读本手册的“重要提示”, 并妥善保管好手册资料, 以备随时查阅。

### 前言

感谢您购买SmallRig产品。

### 重要提示

- 本产品内部含有电子元件, 请勿擅自拆机, 同时避免高处跌落或强烈撞击。
- 请将本产品放置在儿童不能接触的地方。
- 存放或使用本产品时请避免高温、高湿场所。
- 如您对产品有任何疑问, 请联系购买平台, 申请售后处理。

**!** 请勿拆卸产品, 如果您怀疑产品有任何问题, 请联系购买平台, 申请售后处理。

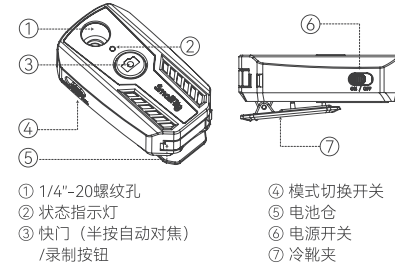
### 包装清单

遥控器 × 1      1/4"-20螺丝 × 1      用户手册 × 1  
CR2032 电池 × 2      六角扳手 × 1

### 适配性

索尼: Alpha 7R V / Alpha 7R IV / Alpha 7R III / Alpha 7 IV / Alpha 7 III / Alpha 7C II / Alpha 7C / Alpha 7CR / Alpha 9 II / Alpha 9 / FX3 / FX30 / Alpha 6700 / Alpha 6600 / Alpha 6100 / Alpha 6400 / ZV-E1 / ZV-E10 / ZV-1 II / ZV-1 / ZV-1F / DSC-RX100M7  
佳能: EOS R5 / R6 Mark II / R6 / R7 / R8 / R10 / R / RP / R50 / M6 Mark II / M50 / 90D  
尼康: Z 50 / Z fc / Z 30

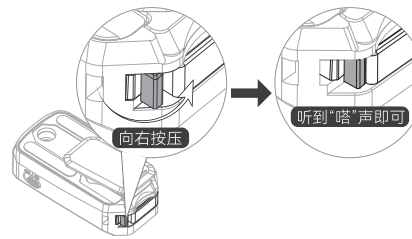
### 产品介绍



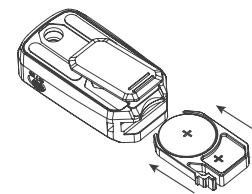
- ① 1/4"-20 螺孔
- ② 状态指示灯
- ③ 快门 (半按自动对焦 / 录制按钮)
- ④ 模式切换开关
- ⑤ 电池仓
- ⑥ 电源开关
- ⑦ 冷靴夹

### 使用前准备

步骤①: 按压如图位置, 取出电池仓。



步骤②: 安装附赠电池, "+"极朝上。



### 配对步骤

| 品牌                | 索尼  | 尼康   | 佳能   |   |
|-------------------|---|--|--|---|
| 适配机型              | Alpha 7R V / Alpha 7R IV / Alpha 7R III / Alpha 7 IV / Alpha 7 III / Alpha 7C II / Alpha 7C / Alpha 7CR / Alpha 9 II / Alpha 9 / FX3 / FX30 / Alpha 6700 / Alpha 6600 / Alpha 6100 / Alpha 6400 / ZV-E1 / ZV-E10 / ZV-1 II / ZV-1 / ZV-1F / DSC-RX100M7   | Z 50 / Z fc / Z 30   | EOS R5 / R6 / R7 / R10 / M6 Mark II / 90D  | EOS R6 Mark II / R8 / R50   |
| 配对步骤              | ① 将遥控器电源开关调节至【ON】, LED指示灯闪烁后熄灭, 确认模式切换开关调节至【LOCK】<br>② 调整相机设置<br>a. 选择MENU—【网络】—【传输 / 远程】—【BLE遥控】—【开】<br>b. 选择MENU—【BLE设置】—【BLE功能】—【开】<br>c. 选择MENU—【配对】<br>③ 长按遥控器快门 / 录制按钮直至指示灯闪烁, 相机屏幕提示【是否允许与本机配对? 已连接装置: SR-RC3】, 选择【确定】<br>④ 屏幕显示【已配对】, 再次点击【确定】即可完成配对<br>⑤ 结合实际拍摄需求, 调节遥控器模式切换开关至【STILL】(快门)或【MOVIE】(录制) | ① 将遥控器电源开关调节至【ON】, 模式切换开关调节至【LOCK】, LED指示灯亮后熄灭<br>② 调整相机设置<br>a. 选择MENU—【设定菜单】—【无线遥控 (ML-L7) 选项】—【无线遥控器连接】—【ON】<br>b. 选择MENU—【设定菜单】—【无线遥控 (ML-L7) 选项】—【保存无线遥控器】<br>③ 长按遥控器快门 / 录制按钮直至指示灯闪烁后放手<br>④ 配对成功后, 屏幕提示【无线遥控器已保存】<br>⑤ 结合实际拍摄需求, 调节遥控器模式切换开关至【STILL】(快门)或【MOVIE】(录制)<br>注: 遥控器模式需要与相机模式一致, 快门/录制按钮不支持半按自动对焦 | ① 将遥控器电源开关调节至【ON】, LED指示灯闪烁后熄灭, 确认模式切换开关调节至【LOCK】<br>② 调整相机设置<br>a. 选择MENU—【BLE设置】—【启用】<br>b. 选择MENU—【无线/BLE连接】—【连接至无线遥控器】—【添加要连接的设备】。<br>c. 相机屏幕提示【正在进行配对, 开始无线遥控器上的配对】<br>③ 长按遥控器快门 / 录制按钮直至指示灯闪烁, 相机屏幕提示【已与SR-RC3配对】, 选择【确定】, 完成配对<br>④ 结合实际拍摄需求, 调节遥控器模式切换开关至【STILL】(快门)或【MOVIE】(录制)。如选择【STILL】模式, 在相机主页面选择【SET】—【驱动模式】—【自拍: 10秒 / 遥控】或【自拍: 2秒 / 遥控】<br>注: 遥控器模式需要与相机模式一致。R6相机选择【MOVIE】模式下, 请选择【MENU】—【相机图标】—【6】—【遥控】—【启用】 | ① 将遥控器电源开关调节至【ON】, LED指示灯闪烁后熄灭, 确认模式切换开关调节至【LOCK】<br>② 调整相机设置<br>a. 选择MENU—【通信功能】—【BLE设置】—【启用】<br>b. 选择MENU—【通信功能】—【连接至无线遥控器】—【添加要连接的设备】<br>c. 相机屏幕提示【正在进行配对, 开始无线遥控器上的配对】<br>③ 长按遥控器快门 / 录制按钮直至指示灯闪烁, 相机屏幕提示【已与SR-RC3配对】, 选择【确定】, 完成配对<br>④ 结合实际拍摄需求, 调节遥控器模式切换开关至【STILL】(快门)或【MOVIE】(录制)。如选择【STILL】模式, 在相机主页面选择【SET】—【驱动模式】—【自拍: 10秒 / 遥控】或【自拍: 2秒 / 遥控】<br>注: 遥控器模式需要与相机模式一致 |
| Q&A①: 无法配对或配对失败   | ① 确认遥控器模式切换开关已调节至【LOCK】<br>② 重启遥控器及相机【BLE功能】, 从头开始重新执行上述配对步骤<br>③ 检查相机固件版本是否为最新版本   | ① 确认遥控器模式切换开关已调节至【LOCK】<br>② 如果相机已经连接其它无线遥控器, 需要删除连接信息后才能连接新设备。<br>选择MENU—【设定菜单】—【无线遥控 (ML-L7) 选项】—【删除无线遥控器】<br>③ 重启相机和遥控器<br>④ 检查相机固件版本是否为最新版本  | ① 确认遥控器模式切换开关已调节至【LOCK】<br>② 如果相机已经连接其它无线遥控器, 需要删除连接信息后才能连接新设备。<br>选择MENU—【无线 / BLE连接】—【连接至无线遥控器】—【删除连接信息】—【确定】。<br>③ 重启相机和遥控器<br>④ 检查相机固件版本是否为最新版本  | ① 确认遥控器模式切换开关已调节至【LOCK】<br>② 如果相机已经连接其它无线遥控器, 需要删除连接信息后才能连接新设备。<br>选择MENU—【通信功能】—【删除连接信息】—【确定】。<br>按照配对步骤重新进行配对<br>③ 重启相机和遥控器<br>④ 检查相机固件版本是否为最新版本  |
| Q&A②: 配对成功后无法正常使用 | ① 确认遥控器模式切换开关已调节至【STILL】或【MOVIE】<br>② 检查确认MENU—【网络】—【传输 / 远程】—【BLE遥控】设置为【开】<br>③ 检查储存卡是否已满, 如果已满, 请更换储存卡; 储存卡已满时, 按下快门 / 录制按钮相机无反应  | ① 确认遥控器和相机处于相同模式【STILL】或【MOVIE】<br>② 检查储存卡是否已满, 如果已满, 请更换储存卡; 储存卡已满时, 按下快门 / 录制按钮相机无反应   | ① 检查MENU—【通信功能】—【BLE设置】处于【启用】状态<br>② 确认遥控器和相机处于相同模式【STILL】或【MOVIE】。如选择【STILL】模式, 确认相机主页面—【SET】—【驱动模式】—【自拍: 10秒 / 遥控】或【自拍: 2秒 / 遥控】已选择。<br>R6相机选择【MOVIE】模式下, 请确认【MENU】—【相机图标】—【6】—【遥控】—【启用】已经选择<br>③ 检查储存卡是否已满, 如果已满, 请更换储存卡; 储存卡已满时, 按下快门 / 录制按钮相机无反应  | ① 确认遥控器和相机处于相同模式【STILL】或【MOVIE】; 如选择【STILL】模式, 确认相机主页面—【SET】—【驱动模式】—【自拍: 10秒 / 遥控】或【自拍: 2秒 / 遥控】已选择<br>② 检查储存卡是否已满, 如果已满, 请更换储存卡; 储存卡已满时, 按下快门 / 录制按钮相机无反应  |

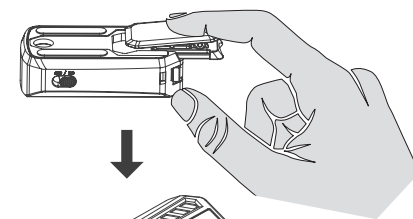
### 指示灯说明

- 电池电量20% ~ 100%: 蓝灯
- 电池电量10% ~ 20%: 红灯
- 电池电量 < 10%: 红灯闪烁

### 安装方式

① 冷靴夹安装: 通过冷靴夹, 夹在内置冷靴的设备上。

② 1/4"-20螺丝安装: 拆卸冷靴夹后, 通过1/4"-20螺丝将遥控器固定至内置1/4"-20螺孔设备上。



### 注意事项

- ① 请勿吞食电池, 有化学烧伤风险。本产品含有纽扣电池, 如果吞食纽扣电池, 2小时内就会造成严重的内部烧伤, 并可能导致死亡。
- ② 请将新电池和旧电池放在远离儿童的地方。
- ③ 如果电池盒无法牢固关闭, 请停止使用产品并让产品远离儿童。
- ④ 如果您认为电池可能被吞食或放置在身体的任何部位, 请立即就医。

- ⑤ 遥控器连接步骤可能随相机不同而变化, 详细信息请参阅相机使用说明书中遥控相关章节。
- ⑥ 通讯距离10米为估算值, 主要取决于周围的环境条件。
- ⑦ 一个遥控器只能与一台相机完成配对, 如需控制另外一台相机, 参考配对步骤将遥控器与需要控制的相机进行配对即可, 前一台相机机会自动解除配对。
- ⑧ 配对成功之后, 相机和遥控器开机之后会自动连接, 无需重新连接。
- ⑨ 不使用时, 请将遥控器电源开关调至OFF。

### 产品参数

|      |                      |
|------|----------------------|
| 工作电压 | 3.0V                 |
| 工作电流 | ≤5mA                 |
| 电池参数 | 3.0V 220mAh 0.72Wh   |
| 控制范围 | 约 10m                |
| 工作温度 | -10°C ~ 45°C         |
| 产品尺寸 | 53.2 × 32.4 × 22.5mm |
| 产品重量 | 18 ± 5g              |
| 主要材料 | ABS + PC             |

\*数据为SmallRig实验室测定值, 但因客观环境变化, 可能会略有偏差。

### 保修条款

请保留您的原始购买单据及保修卡, 同时包含您的购买日期、产品序列号等, 这些资料质保服务时均需要提供。

### 售后质保条款

SmallRig产品自下单付款之日起享有质保服务。  
· 电子产品(除V口电池): 1年质保。  
· V口电池: 2年质保。  
· 非电子产品: 2年质保。  
注: 若销售地国家或地区的适用法律法规有冲突的, 以销售地国家或地区有关质保期的法律法规为准。

### 质保无效说明

1. 当用户违反操作指引或用户手册中“重要提示”任何一条导致的质量失效, 不在质保范围内。
2. 产品序列号标识已经被撕毁或无法辨识, 不在质保范围。
3. 产品使用不当等非产品本身质量问题, 而造成的产品损坏, 不在质保范围。
4. 非官方指导的私自改装、拆解、维修等行为而造成的损坏, 不在质保范围。
5. 因火灾、水灾、雷击等不可抗力造成的产品损坏, 不在质保范围。

### 维修方式

· 属于质保范围的, SmallRig 根据产品具体的故障对产品进行维修或更换; 维修后的产品 / 部件享受原有保修期的剩余时长。

### 联系方式

· 建议您优先前往相应购买平台联系在线客服, 提出产品维修申请。  
· 您也可以通过 SmallRig 服务邮箱申请维修服务。  
服务邮箱: support@smallrig.com

### 保修卡

|      |  |
|------|--|
| ID编号 |  |
| 产品名称 |  |
| 购买日期 |  |
| 用户姓名 |  |
| 用户电话 |  |
| 用户地址 |  |
| 购买单据 |  |

制造商: 深圳市乐其创新股份有限公司  
地址: 中国广东省深圳市龙华区观澜街道新湖社区观光路1301-50号丰和工业园厂房5栋501、501、601  
委托商: 深圳市乐其创新股份有限公司  
地址: 中国广东省深圳市龙华区观澜街道新湖社区观光路1301-50号丰和工业园厂房5栋602



型号: 3902

执行标准: GB 4943.1-2011

中国制造