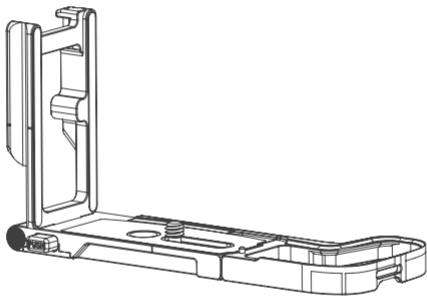


# SmallRig



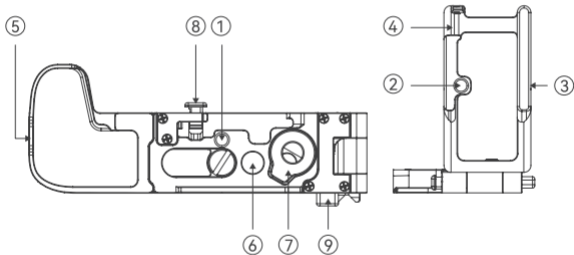
## Foldable L-Bracket for Canon EOS R8

User Manual

## Foreword

Thank you for purchasing SmallRig's product.

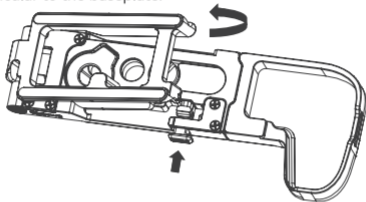
## Product Introduction



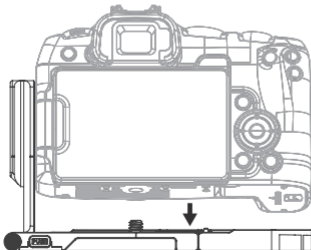
- |                         |              |                         |
|-------------------------|--------------|-------------------------|
| ① 1/4"-20 Threaded Hole | ④ Strap Slot | ⑦ Flat-Head Screwdriver |
| ② 1/4"-20 Threaded Hole | ⑤ Strap Slot | ⑧ Unfolding Bottom      |
| ③ Arca-Swiss Plate      | ⑥ QD Socket  | ⑨ Folding Bottom        |

## Installation Instruction

\* Before installation, please press the unfold button to unfold the side panel until it is perpendicular to the baseplate.

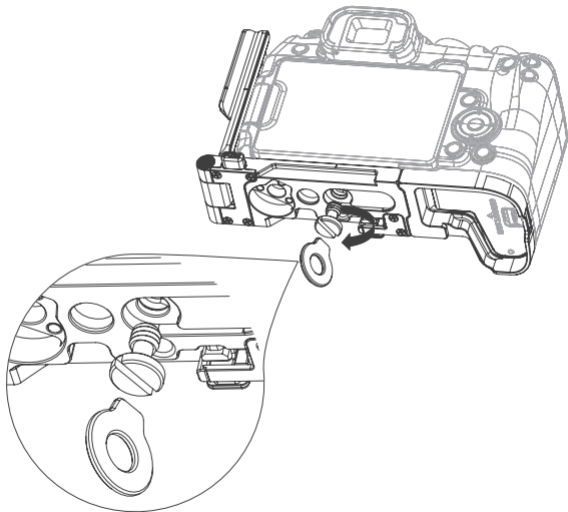


Step1: Align the camera from top to bottom with the 1/4"-20 screw and locating pin of the foldable L-shape mount plate.



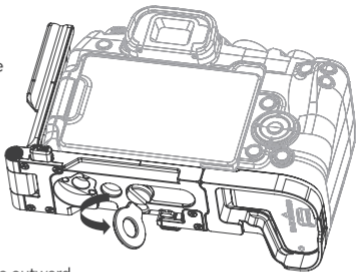
\* The package does not include the camera

Step2: Press to remove included flat-head screwdriver and tighten the bottom 1/4"-20 screw to lock and secure the foldable L-shape mounting plate.

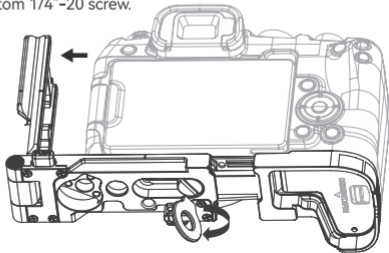


## Operating Guide for Baseplate

Step1: Loosen the bottom 1/4"-20 screw via the included flat-head screwdriver.



Step2: Stretch the side plate outward and lock the bottom 1/4"-20 screw.



## Specifications

Compatibility	Canon EOS R8,Canon EOS RP
Product Dimensions	148.2 × 82 × 56.4mm
Product Weight	110g ± 5g
Material(s)	Aluminum Alloy