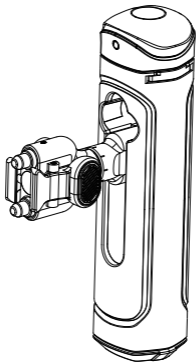


SmallRig



Rotatable Quick Release Side Handle
旋转快拆侧手柄

Operating Instruction / 操作指引

Thank you for choosing SmallRig products.
感谢您购买 SmallRig 产品。

Warnings / 重要提示

1. Please read this Operating Instruction carefully before using this product.
使用本产品之前，请仔细阅读操作指引。
2. Please pay attention to all warning prompts and follow all instructions in the Operating Instruction.
请注意所有警告提示并遵循使用操作指引内的所有指令。
3. Please do not throw away the product wilfully as its battery contains a few harmful substances. Please recycle the damaged or unused products in accordance with the waste management measures.
电池内部有少许有害物质，请勿任意丢弃，请将损坏或是不再使用的产品，依照废弃物管理办法回收处理。
4. Children should use it under adult supervision.
儿童请在成人指导下使用。
5. Don't swallow the batteries, as there is a risk of chemical burns. This product contains button batteries. Swallowing button batteries may cause serious internal burns within 2 hours and may lead to death.
请勿吞食电池，有化学烧伤风险。本产品含有纽扣电池。如果吞食纽扣电池，2小时内就会造成严重的内部烧伤，并可能导致死亡。
6. Keep new and used batteries away from children.
请将新电池和旧电池放在远离儿童的地方。
7. If the battery compartment cannot be securely closed, stop using the product and keep it away from children.
如果电池盒无法牢固关闭，请停止使用产品并让产品远离儿童。
8. If you suspect a battery has been swallowed or inserted into the body, seek immediate medical attention.
如果您认为电池可能被吞食或放置在身体的任何部位，请立即就医。

- a) Remove and immediately recycle or dispose of used batteries according to local regulations and keep away from children. Do NOT dispose of batteries in household trash or incinerate.
- b) Even used batteries may cause severe injury or death.
- c) Call a local poison control center for treatment information.
- d) The compatible battery type: CR2032.
- e) The nominal battery voltage: 3.0V DC.
- f) Non-rechargeable batteries are not to be recharged.
- g) Do not force discharge, recharge, disassemble, heat above (manufacturer's specified temperature rating) or incinerate. Doing so may result in injury due to venting, leakage or explosion resulting in chemical burns.
- h) Ensure the batteries are installed correctly according to polarity (+ and -).
- i) Do not mix old and new batteries, different brands or types of batteries, such as alkaline, carbon-zinc, or rechargeable batteries.
- j) Remove and immediately recycle or dispose of batteries from equipment not used for an extended period of time according to local regulations.
- k) Always completely secure the battery compartment. If the battery compartment does not close securely, stop using the product, remove the batteries, and keep them away from children.

WARNING

- **INGESTION HAZARD:** This product contains a button cell or coin battery.
- **DEATH** or serious injury can occur if ingested.
- A swallowed button cell or coin battery can cause **Internal Chemical Burns** in as little as **2 hours**.
- **KEEP** new and used batteries **OUT OF REACH** of **CHILDREN**
- **Seek immediate medical attention** if a battery is suspected to be swallowed or inserted inside any part of the body.





Please refrain from disassembling the product. If there's any problem with the product, please contact the purchase platform for after-sales assistance.

请勿拆卸产品，如果您怀疑产品有任何问题，请联络购买平台，申请售后处理。

FCC Warning:

This equipment has been tested and found to comply with the limits for a Class B digital device, pursuant to part 15 of the FCC Rules. These limits are designed to provide reasonable protection against harmful interference in a residential installation. This equipment generates, uses and can radiate radio frequency energy and, if not installed and used in accordance with the instructions, may cause harmful interference to radio communications. However, there is no guarantee that interference will not occur in a particular installation. If this equipment does cause harmful interference to radio or television reception, which can be determined by turning the equipment off and on, the user is encouraged to try to correct the interference by one or more of the following measures:

- Reorient or relocate the receiving antenna.
- Increase the separation between the equipment and receiver.
- Connect the equipment into an outlet on a circuit different from that to which the receiver is connected.
- Consult the dealer or an experienced radio / TV technician for help.

Caution: Any changes or modifications to this device not explicitly approved by manufacturer could void your authority to operate this equipment.

- (1) This device may not cause harmful interference, and
- (2) This device must accept any interference received, including interference that may cause undesired operation.

This equipment complies with FCC radiation exposure limits set forth for an uncontrolled environment.

ISED Statement

- English: This device complies with Industry Canada license - exempt RSS standard(s).

Operation is subject to the following two conditions:

- (1) This device may not cause interference, and
- (2) This device must accept any interference, including interference that may cause undesired operation of the device.

The digital apparatus complies with Canadian CAN ICES-3 (B)/NMB-3(B).

- French: Le présent appareil est conforme aux CNR d'Industrie Canada applicables aux appareils radio exempts de licence.

L'exploitation est autorisée aux deux conditions suivantes:

- (1) l'appareil ne doit pas produire de brouillage, et
 - (2) l'utilisateur de l'appareil doit accepter tout brouillage radioélectrique subi, même si le brouillage est susceptible d'en compromettre le fonctionnement.
- l'appareil numérique du ciem conforme canadien peut - 3 (b) / nmb - 3 (b).

This device meets the exemption from the routine evaluation limits in section 2.5 of RSS 102 and compliance with RSS 102 RF exposure, users can obtain Canadian information on RF exposure and compliance.

cet appareil est conforme à l'exemption des limites d'évaluation courante dans la section 2.5 du cnr - 102 et conformité avec rss 102 de l'exposition aux rf, les utilisateurs peuvent obtenir des données canadiennes sur l'exposition aux champs rf et la conformité.

This equipment complies with Canada radiation exposure limits set forth for an uncontrolled environment. This equipment should be installed and operated with minimum distance 0cm between the radiator & your body.

Cet équipement est conforme Canada limites d'exposition aux radiations dans un environnement non contrôlé.

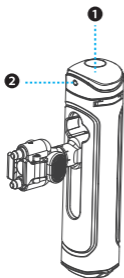
Product Introduction / 产品简介

Welcome to use the new SmallRig Rotatable Quick Release Side Handle, which works with the mobile phone cages to provide solutions for dual-handheld and low-angle shooting. The handle adapts to SmallRig's new quick release cages, which can be quickly installed and removed through the quick release system.

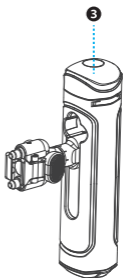
欢迎使用全新 SmallRig 旋转快拆侧手柄，本品通过与拓展框搭配，为手机双手持拍摄和低机位拍摄提供高效解决方案。该手柄适配于 SmallRig 全新快拆系列拓展框，通过拓展框上的快拆卡槽、1/4"-20螺纹孔和手柄转接头相互配合，可实现手柄快速安装和拆卸。

The product is available in two items: wireless control version and non-wireless control version.

本品分为无线控制版和非无线控制版。



SmallRig Rotatable Wireless Control
& Quick Release Side Handle 4402B
SmallRig 旋转无线快拆侧手柄 4402B



SmallRig Rotatable Quick
Release Side Handle 4403B
SmallRig 旋转快拆侧手柄4403B

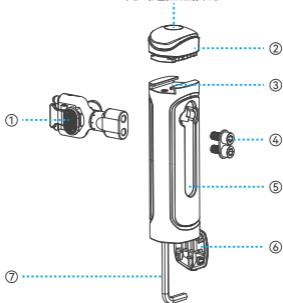
- 1** Wireless Remote Controller
无线遥控器
Name: SmallRig WR-03
配对名称: SmallRig WR-03

- 2** Wireless Control
Indicator
无线控制指示灯

- 3** Cold Shoe Decorator
冷靴装饰件

Product Details / 产品介绍

Shutter Button
无线遥控器按键

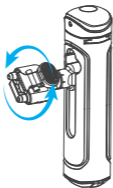


- ① Rotatable Quick Release Adapter
旋转快拆转接头
- ② Wireless Remote Controller / Decorator
无线遥控器 / 冷靴装饰件
- ③ Cold Shoe Mount
冷靴口
- ④ Adapter Fixing Screw
转接头固定螺丝
- ⑤ Adapter Fixing Slot
转接头固定槽
- ⑥ Allen Wrench Cover
扳手盖板
- ⑦ Allen Wrench
六角扳手

In the Box / 包装清单

Handle 手柄	× 1
Rotatable Quick Release Adapter 可旋转快拆转接头	× 1
Wireless Remote Controller / Decorator 无线遥控器 / 冷靴装饰件	× 1
Operating Instruction 操作指引	× 1

Functions Description / 功能说明



(1) Side Handle Installation: as shown in the figure above, use the Allen Wrench ⑦ to install and fix the Quick Release Adapter ① into the Adapter Fixing Slot ⑤.

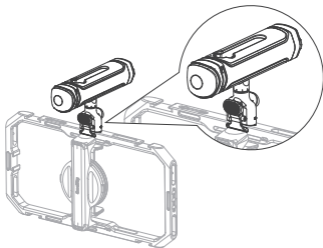
侧手柄功能: 如上图所示, 用六角扳手 ⑦ 将快拆转接头 ①、转接头固定螺丝 ④ 与转接头固定槽 ⑤ 保持同一方向安装固定, 即可实现侧手柄功能。

(2) Rotating Function: The Rotatable Quick Release Adapter ① can rotate and halt at any desired angle.

旋转功能: 安装有旋转快拆转接头的手柄可直接旋转，并停止于任意角度。

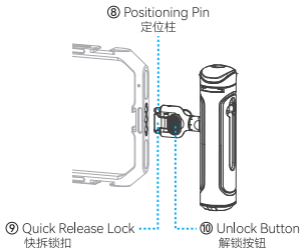
(3) Top Handle Installation: Set the handle to the appropriate angle and mount on the video cage as a top handle.

上手提功能: 将手柄旋转至适合的角度，并安装于拓展框，即可实现上手提功能。



(4) Quick Release Lock: as shown in the figure below, align the Positioning Pins ⑧ on the Quick Release Adapter with the upper and lower 1/4"-20 threaded holes on the cage, and press the side handle sideways (Note: no need to press and hold the Unlock Button ⑩) until the Quick Release Lock ⑨ makes a "click" sound, indicating that the lock has been successfully locked into the cage.

快拆锁定：如下图所示，将快拆转接头上的定位柱 ⑧ 对准拓展框上的上下两个 1/4"-20 螺纹孔，侧向按压侧手柄（注意：无需按住解锁按钮 ⑩）直至快拆锁扣 ⑨ 发出“咔哒”声，表明锁扣已成功锁入快拆卡槽。



(5) Quick Release Unlock: press the Unlock Button ⑩ on both sides to realize the quick unlock mechanism.

快拆解锁：双面按压上图中解锁按钮 ⑩，即可实现快拆机构解锁。

(6) Wireless Remote Control: SmallRig Wireless Remote Control Quick Release Side Handle 4402B features wireless control function, the operating instructions are shown in the following table:

无线控制: 无线快拆侧手柄 4402B 带有无线控制拍摄的功能,操作说明见下表:

Shutter Name	SmallRig WR-03	
Turning On	Press the button for 2 seconds to turn on, the indicator light flashes quickly for 8 seconds to enter the pairing state, and the indicator light flashes green slowly in the pairing state	The indicator flashes green
Turning Off	Press the button for 2 seconds, the indicator light will be on for 2 seconds, flash 2 times and then turn off	The indicator turns off
No Paired Connection	The indicator flashes green slowly	The indicator flashes slowly
Paired Connection	After successful pairing, the indicator light turns off. Automatic turn off after 10 minutes of no operation.	The indicator turns off
Automatically Turning Off	Automatic turn off after no operating for 3 minutes without pairing	The indicator flashes off
Photographing	Press the button shortly and the green light flashes once	The green light flashes once
Video Shooting	Press the button shortly to turn on shooting, and the green light flashes once; Press the button again to stop shooting and the green light flashes once	The green light flashes once

Low Battery	When the battery voltage is below 2.5V, the indicator flashes red	The indicator flashes red slowly
Automatic Pairing	After turning on, if the wireless control of the last paired mobile phone is turned on, it will be connected automatically	
Automatic Pairing after Wake up from Sleep Mode	After waking up from sleep, if the wireless control of the last paired mobile phone is turned on, it will be connected automatically	
Unpair the Phone	When connected, unpair the phone, the remote controller will enter the unpaired connection state	The indicator flashes green slowly
Unpair due to Distance	If the distance between the remote controller and the mobile phone is too far (greater than 10m), the remote controller will enter the unpaired connection state	The indicator flashes green slowly

遥控器名称	SmallRig WR-03	
开机方式	长按2秒按键开机，指示灯快闪8秒进入待配对状态，待配对状态下指示灯绿色慢闪烁	指示灯绿色闪烁
关机方式	长按2秒按键，指示灯长亮2秒，闪烁2次后熄灭	指示灯熄灭
无配对连接状态	指示灯绿色慢闪烁	指示灯慢闪
自动关机状态	开机后，无配对连接状态下无操作3分钟自动关机	指示灯闪烁熄灭

已配对连接状态	配对连接后指示灯熄灭，10分钟无操作自动关机	指示灯熄灭
拍照	短按按键，绿灯闪烁一次	绿灯闪烁一次
拍视频	短按按键开启拍摄，绿灯闪烁一次；再次短按按键，停止拍摄，绿灯闪烁一次	绿灯闪烁一次
低电量状态	当电池电压低于2.5V，指示灯红色代替绿色闪烁	红灯慢闪
开机自动配对	开机后，如上一次已配对手机无线控制是打开状态，直接自动连接；	
休眠唤醒后自动配对	休眠唤醒后，如上一次已配对手机无线控制是打开状态，直接自动连接；	
手机删除连接	自拍器与手机处于连接状态时，在手机里面取消自拍器配对，自拍器进入无配对连接状态	绿灯慢闪
距离过远断开	自拍器与手机处于连接状态时，自拍器或手机距离过远（大于10m）断开后，自拍器进入无配对连接状态	绿灯慢闪
打开手机无线控制自动配对	自拍器处于无配对连接状态时，打开手机无线控制，如上一次已配对，自动连接	

Wireless Remote Controller Specifications

Operating Power Consumption	15mW
Standby Power Consumption	0.006mW
Battery	CR2032 225mAh
Voltage	3V
Current	0.2A
Operating Temperature	-30°C to 60°C / -22°F to 140°F
Wireless Control Distance	10.0m / 32.8ft
Wireless Controller Frequency	2.4G Hz
Battery Specification	3V / 230mAh / 0.69Wh

无线遥控器产品参数

工作功耗	15mW
待机功耗	0.006mW
电池规格	CR2032 225mAh
电压	3V
电流	0.2A
工作温度	-30°C ~ 60°C
无线控制距离	10m
无线频率	2.4G Hz
电池参数	3V / 230mAh / 0.69Wh

Service & Warranty / 保修条款

Please keep your original receipt and guarantee card. Be sure the dealer has written on it the date of purchase and SN of the product. These are required for warranty service.

After-sale Warranty Terms

SmallRig products are entitled to warranty services as of the date of payment.

- Electronic products (except V mount battery): 1-year warranty.
- V mount battery: 2-year warranty.
- Non-electronic products: 2-year warranty.

Note: In case of any conflict between our warranty period policy and applicable laws and regulations of the country / region where the products are sold, the latter shall prevail.

This Warranty Does Not Cover

1. If users fail to adhere to the "Operating Instruction" or any "Warnings" stated in the user manual, resulting in a quality failure, it falls outside the scope of warranty coverage.
2. The product identification or SN label is removed or defaced in any way.
3. Product damage caused by problems not attributable to the quality of the products such as improper use of the products.
4. Product damage caused by unauthorized modification, disassembly, repair and other acts.
5. Product damage caused by fires, floods, lightning and other force majeure factors.

Warranty Mode

- For the products within the scope of warranty, SmallRig will repair or replace them on the basis of specific failures; the repaired / replaced products / parts are entitled to the remaining part of the original warranty period.

Contact Information

- You're advised to contact the online customer service personnel of corresponding shopping platform and submit a repair service application.
- You may also apply for repair service through SmallRig's service email.

Service Email: support@smallrig.com

请保留您的原始购买单据及保修卡,同时包含您的购买日期、产品序列号等,这些资料质保服务时均需要提供。

售后质保条款

SmallRig产品自下单付款之日起享有质保服务。

- 电子产品(除V口电池): 1年质保。
- V口电池: 2年质保。
- 非电子产品: 2年质保。

注:若销售地国家或地区的适用法律法规有冲突的,以销售地国家或地区有关质保期的法律法规为准。

质保无效说明

1. 当用户违反操作指引或用户手册中“重要提示”任何一条导致的质量失效,不在质保范围内。
2. 产品序列号标识已经被撕毁或无法辨识,不在质保范围。
3. 产品使用不当等非产品本身质量问题,而造成的产品损坏,不在质保范围。
4. 非官方指导的私自改装、拆解、维修等行为而造成的损坏,不在质保范围。
5. 因火灾、水灾、雷击等不可抗力造成的产品损坏,不在质保范围。

维修方式

·属于质保范围的,SmallRig根据产品具体的故障对产品进行维修或更换;维修后的产品/部件享受原有保修期的剩余时长。

联系方式

- 建议您优先前往相应购买平台联系在线客服,提出产品维修申请。
- 您也可以通过 SmallRig 服务邮箱申请维修服务。

服务邮箱:support@smallrig.com

Guarantee Card / 保修卡

ID No. ID编号	
Item Name 产品名称	
Purchase Date 购买日期	
User Name 用户姓名	
Mobile 用户电话	
Address 用户地址	
Receipt 购买单据	

EC

REP

Prolinx GmbH
Brehmstr.56,40239 Duesseldorf Germany
eu@eulinx.eu

UK

REP

Prolinx Global LTD
27 Old Gloucester Street London,WC1N3AX, UK
eu@eulinx.eu

CE RoHS



FC

FCC ID: 2BC2U-4405LEQ1



通过认证

合格证
已检验



219-239355

Made in China / 中国制造

执行标准: GB 4943.1-2022

Manufacturer: Shenzhen Leqi Innovation Co., Ltd.

Add: Rooms 103, 501 and 601, Building 5, Fenghe Industrial Park, Nos. 1301-50 Guanguang Road, Longhua District, Shenzhen, Guangdong, China.

制造商: 深圳市乐其创新股份有限公司

地址: 中国广东省深圳市龙华区观澜街道新澜社区观光路 1301-50 号丰和工业园厂房 5 栋 103、501、601

Consignor: Shenzhen LC Co., Ltd.

Add: Rooms 602, Building 5, Fenghe Industrial Park, No. 1301-50 Guanguang Road, Xinlan Community, Guanlan Street, Longhua District, Shenzhen, Guangdong, China.

委托商: 深圳市乐长科技有限公司

地址: 中国广东省深圳市龙华区观澜街道新澜社区观光路 1301-50 号丰和工业园厂房 5 栋 602

LQ-P1297-18



ETICETTATURA AMBIENTALE
ENVIRONMENTAL LABELING



WE ARE HERE FOR YOU
服务与支持